

## **POLLING DISTRICT AND POLLING PLACES REVIEW 2019**

### **STEVENAGE CONSTITUENCY**

#### **CHELLS WARD**

The map of Chells Ward is available on the following page. The Ward has four Polling Districts. Details of the reference letters and electorate information are set out below:

#### **POLLING DISTRICTS AND STATISTICAL DATA**

Polling District	Electoral Division	Properties	Electors	In Person Voters	Postal Voters
CHA	Chells	951	1692	1098	594
CHB	Chells	1300	2382	1571	811
CHC	Shephall	269	449	329	120
CHD	Shephall	224	461	242	219

#### **POLLING PLACES**

Polling District	Polling Place	Envisaged Polling Station for the next scheduled election
CHA	CHA	St Hugh & St John Shared Church, Mobbsbury Way, SG2 0LT
CHB	CHB	Camps Hill Primary School, Chells Way, SG2 0LT
CHC	CHC, CHA & CHB	St Hugh & St John Shared Church, Mobbsbury Way, SG2 0LT
CHD	CHD & CHB	Camps Hill Primary School, Chells Way, SG2 0LT

#### **POTENTIAL DEVELOPMENTS**

There are no developments within the Ward that are expected to impact on the allocation of Polling Districts and Places.

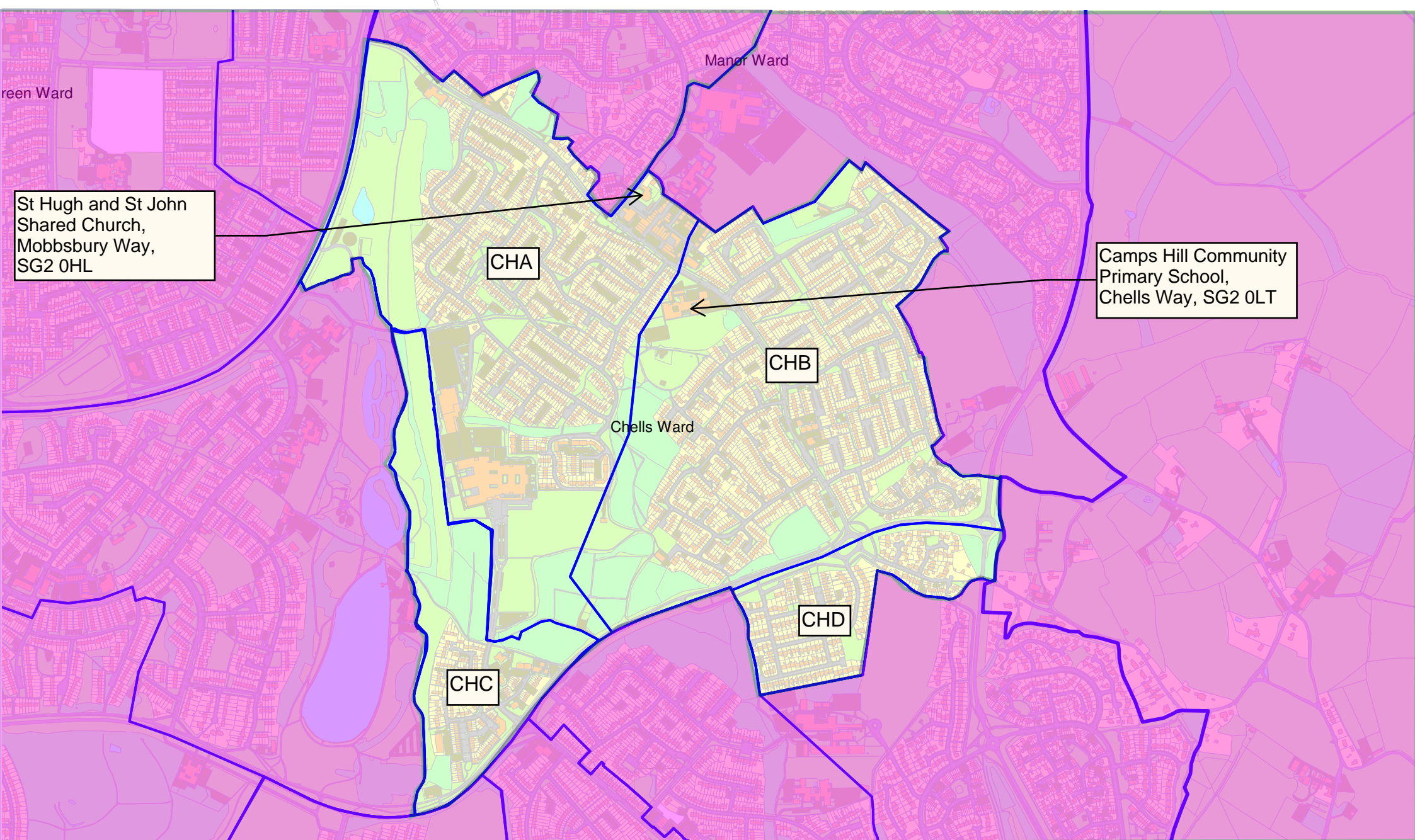
## **COMMENTS RECEIVED**

Comments were received from the Stevenage Liberal Democrats who welcomed the allocation of a new polling station for voters in Polling District CHC. They also had no objections to the use of St Hugh & St John Shared Church for voters in Polling District CHA.

Comments were also received from two individuals who objected to the use of Camps Hill Primary School as a polling station. The reasons included the potential disruption for parents who have to take time off to look after their children. Hertfordshire County Council, working with Returning Officers, are proactive in contacting schools in advance of an election to work through how best to accommodate arrangements on Polling Day, including encouraging schools to allocate Polling Day as a staff training day.

There are no amendments from the draft proposals to those in these final proposals.

# Stevenage Constituency - Chells Borough Ward



Polling District and Places Review 2019 -

The Polling District designatory letters are shown in a black bordered white edged box. The boundaries are shown edged in blue

This map is produced by Stevenage Borough Council. Crown copyright and database rights 2018 100024285